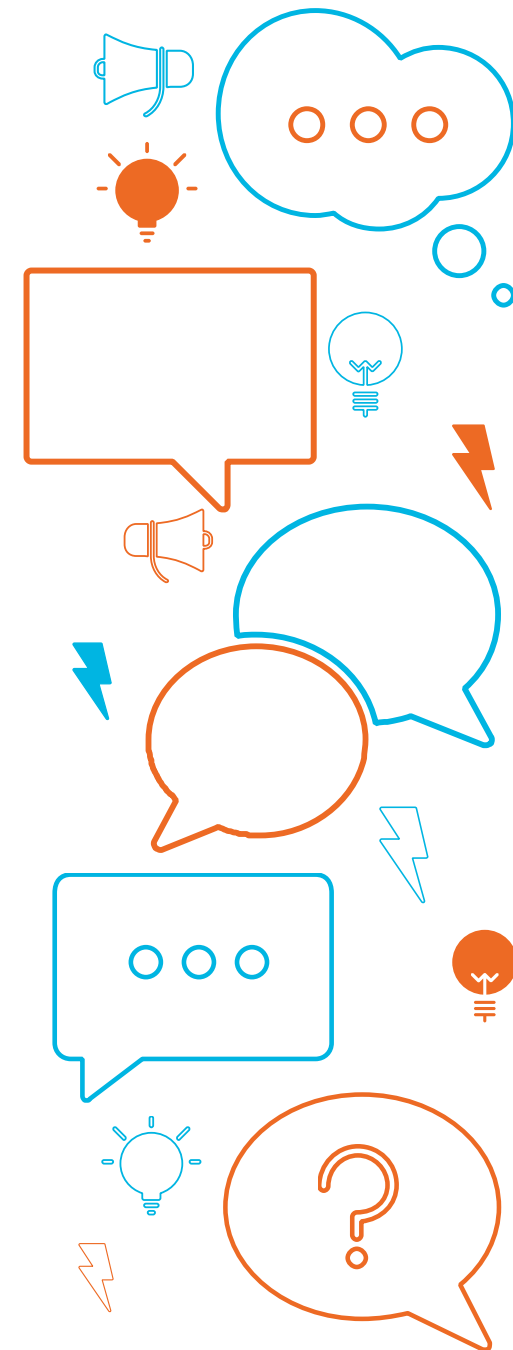




# BIG Ideas for REGIONAL NSW

Event Information



Everyone has at least **one idea** for growing our regional communities.

It could be small, simple and practical... or it could be a tunnel under the Blue Mountains.

To celebrate our 20<sup>th</sup> anniversary the Western Research Institute (WRI) is hosting a Big Ideas exchange.

We want to gather big thinkers, entrepreneurs, business and community leaders to come together for a

**regional brainstorm.**

No idea is too big or too small if it leads to actionable change for the future of our regional communities.



# The Western Research Institute



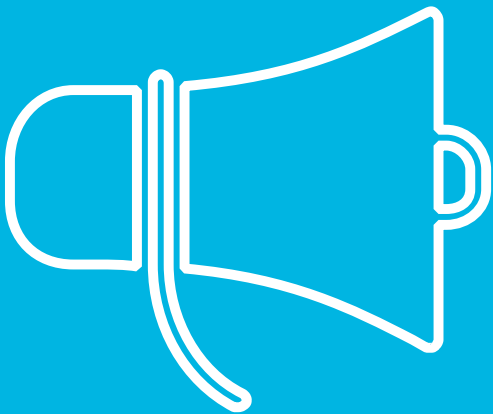
We aim to be a **trusted partner** of business, government and communities **in regional development**.

Our **integrity, local knowledge and strong local connections** ensure that our advice and support is highly sought after.

We help to **grow regional businesses** and services, **support better decision making** and **help attract investment** for the benefits of our clients and stakeholders.

As a **not-for-profit Institute**, we invest our surpluses in the Inland Research Fund so we can continue to find ways to **help inland and regional communities to grow into the future**.

In 2019 we are celebrating 20 years of providing robust, credible and independent research and information for regional Australia.



# Turning Ideas into Actions

## Outcomes:

### *A list of solid inter-regional priorities*

At the end of the day we will have a prioritised list of tested and discussed Big Ideas for ALL of Regional NSW.

### *Collaboration and cooperation*

On the day we will have identified what needs to happen and how we can work together to bring the ideas to life. Connect with stakeholders, suppliers and collaborators in the room.

### *Back it up with WRI's Regional expertise.*

With our 20 years experience of exploring, analysing and informing businesses and policy makers in NSW and our knowledge of regional economies, WRI can evaluate ideas from the workshop by applying our economic and social research know-how to present them back to potential stakeholders or funding bodies as viable and actionable initiatives for regional NSW.



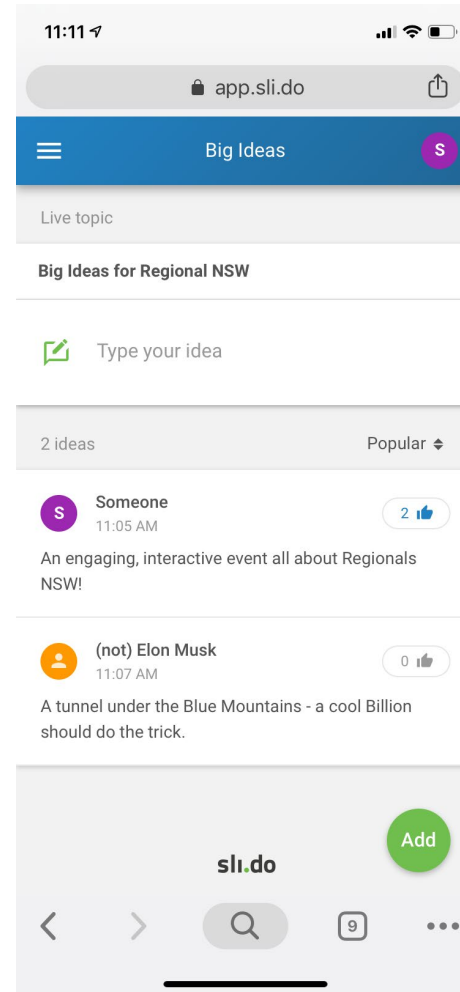
# Live and Interactive

With [Sli.do](https://sli.do) onboard as our Tech Sponsors our **Big Ideas exchange will come alive** in a whole new way.

Use your smartphone, tablet or laptop to **send your ideas up into the brainstorming cloud – instantly!**

**Vote, reply and collaborate** with other ideas and thinkers to really **spark creative ideas.**

**See the results as they happen** on the big screens.

The logo for sli.do, featuring the text 'sli.do' in a bold, sans-serif font. The 'i' is green, and the 'do' is black.

# Event Details:



## BIG Ideas Workshop

|             |   |
|-------------|---|
| Date        | Thursday, 26 September 2019   |
| Time        | 1:30pm – 5:30pm   |
| Venue       | Charles Sturt University, Bathurst Engineering Building 1305  |
| Format      | Interactive ideas and collaboration workshop.   |
| Interaction | Use your phone, tablet or laptop to contribute, vote and ask questions using <a href="https://www.sli.do/">Sli.do</a> . |
| Catering    | Brain activating afternoon tea.   |

## BIG Birthday Bash

|               |  |
|---------------|--|
| Date          | Thursday, 26 September 2019  |
| Time          | 7:00pm – 10:00pm   |
| Venue         | Charles Sturt University, Bathurst Engineering Building 1305   |
| Format        | Cocktail reception.  |
| Entertainment | Roaming performances from Cirkus Surreal (venue permitting).   |
| Catering      | Abundant grazing tables and sumptuous canapes of regional produce along with regionally crafted beverages. |



# Event Attendance



Our event will bring together **leaders in regional development.**

Australian  
Government  
representatives

Business  
Leaders

Community  
Leaders

Education  
leaders

Entrepreneurs

Industry  
Leaders

Local  
Government  
Representatives  
from across  
Regional NSW

NSW State  
Government  
representatives

Regional  
Development  
Experts

Thought  
Leaders

WRI's  
Stakeholders  
and clients



# Our Clients



|  |   |   |  |  |                                 |                               |
|--|---|---|--|--|---------------------------------|-------------------------------|
| Agrifoods Australia                                    | Bathurst Regional Council                             | Cotton Consultants Australia Inc.                           | Hort Innovation Australia              | Narromine Shire Council                  | RDA Orana                       |                               |
| AirServices Australia                                  | Bathurst RSL Club                                     | Country Energy  | Housing Plus                           | NATSEM                                   | Regional EnviroScience          |                               |
| Albury Wodonga Corporation                             | Bells Line Expressway Group                           | Cowra Shire Council   | Hyder pty Ltd                          | NCVER                                    | Reliance Credit Union           |                               |
| All Saints College, Bathurst                           | Bland Shire Council                                   | Deakin University   | Illawarra Regional Information Service | Netwaste                                 | Renewable Fuels Australia       |                               |
| Australian Meat Industry Council                       | Blayney Shire Council                                 | Delta Electricity   | Indigo Event & Marketing Services      | Northern Oral Health Network             | Rotary Club Bathurst - Daybreak | Unimutual                     |
| Australian Meat Processing Corporation                 | Bond University                                       | Department of Planning, Heritage Office                     | James Cook University                  | NSW Department of Primary Industry       | SEGRA                           | United Protestant Association |
| Applied Economics                                      | Cabonne Shire Council                                 | Department of Premier and Cabinet NSW                       | Junee Shire Council                    | NSW DPE Murray-Murrumbidgee              | SG Heilbron and Associates      | University of Ballarat        |
| Arts OutWest   | Cadia Valley Operations                               | Department of Primary Industries                            | Lachlan Valley Water                   | NSW Ministry of Transport                | Shoalhaven Council              | University of Technology      |
| Association of NSW Regional Conservatoriums            | Cementa   | Department of State and Regional Development                | Land and Property Management Authority | NSW Water Solutions                      | Simplot Australia Pty Ltd       | Various                       |
| Augusta Margaret River Council                         | Central Darling Shire                                 | Dept Industry, Innovation & Regional Development - Victoria | Lithgow City Council                   | Oberon Shire Council                     | Skillset                        | VERTO                         |
| Australian Agricultural and Resource Economics Society | Central Tablelands Water                              | Dominion Consulting   | LiveBetter                             | OCTEC                                    | State Water                     | Warrumbungles Shire Council   |
| Australian Communications & Media Authority            | Central West Community College                        | Dubbo Regional Council                                      | Liverpool                              | Orange City Council                      | TAFE Education and Training     | Water Directorate             |
| Australian Paper                                       | CENTROC   | Fairfield City Council                                      | Lower Macquarie Water Utilities        | Parkes Shire Council                     | TAFE NSW Western Institute      | Weddin Shire Council          |
| Australian Pork Limited                                | Charles Sturt University                              | Farming Together  | MacIntosh MacPhillamy                  | Perpetual Investment Management Ltd      | Teeth for Health                | Wellington Shire Council      |
| Australian Water Engineering                           | Chifley Business School                               | Geolyse   | Maitland City Council                  | Place Design Group/Blayney Shire council | Terry Larkin & Associates       | Western College               |
| Supercars Australia                                    | CleanTeq  | Glenray Industries  | Maitland/Newcastle Catholic Diocese    | Printhie Wines                           | Teys Group                      | Westhaven                     |
| Barnardos  | Coffs Harbour City Council                            | Gold Coast TAFE   | The Super Investor                     | Queensland Farmers Federation            | The Mac                         | Westpac                       |
| Barwon Darling Alliance                                | Commonwealth Bank                                     | Goulburn Mulwaree Council                                   | Mid-Western Regional Council           | RDA Central West                         | Thompson Couplings Limited      | Willoughby Council            |
| Bathurst Harness Racing Club                           | Community Services and Health Industry Skills Council | Greater Hume Shire Council                                  | Murray Regional Development Board      | RDA Far West                             | Tumut Shire Council             |                               |
| Bathurst Memorial Entertainment Centre                 | Cootamundra-Gundagai Council                          | Griffith University   | Museums and Galleries NSW              | RDA Murray                               | Tweed Development Corporation   |                               |





Proudly brought to you by our Awesome Sponsors:

GOLD SPONSORS



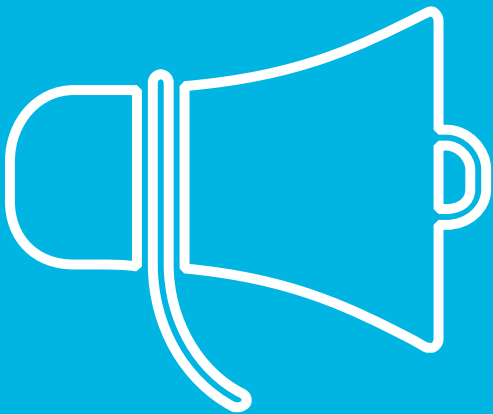
Charles Sturt  
University

SILVER SPONSORS



Upstairs  
STEP UP YOUR STARTUP

TECH SPONSORS



Sponsoring our event is a **unique opportunity**  
for your organisation.

- Align your organisation with an interactive, innovative and engaging event.
- Cement your organisation's commitment to social and economic regional development.
- Put your organisation's brand in front of leaders, entrepreneurs, and movers and shakers in Regional NSW.
- Support the Western Research Institute in its 20<sup>th</sup> anniversary celebrations.



# Sponsor Benefits

## GOLD SPONSORSHIP \$2,500

- VIP seating at Big Ideas workshop.
- Nominate 3 Big Thinkers to attend.
- Feature in event information and presentation.
- Acknowledgement as Gold sponsor in all promotional material.
- Include promotional materials in event pack.
- Opportunity to display banner at workshop and celebration.
- Delegate list.

## SILVER SPONSORSHIP \$1,250

- Nominate 1 additional Big Thinker to attend.
- Acknowledgement as Silver sponsor in all promotional material.
- Include promotional materials in event pack.
- Delegate list.

## EXTRAS - \$1,000

Pitch YOUR one big idea.

The opportunity to discuss your one big idea with the leaders and thinkers in the room.



# The next steps...

[Register to attend on our website](#)

*Don't forget to add a ticket for our anniversary celebration  
function which starts at 7:00pm*

Contact us for more information:

Email: [big.ideas@wri.org.au](mailto:big.ideas@wri.org.au)

Ph: 02 6333 4000

For sponsorship contact our events team at  
[big.ideas@wri.org.au](mailto:big.ideas@wri.org.au) and sign on as a sponsor.

